



**“I was bold in the pursuit of knowledge, never fearing to follow truth and reason to whatever results they led, and bearding every authority which stood in their way.”**

THOMAS JEFFERSON  
LETTER TO DR. THOMAS COOPER, 1814



“Drive it like you stole it.”

NOT THOMAS JEFFERSON

**GETAWAY CAR** Albert Small (Engr '46) has presented the Library with a collection of more than 3,000 American trade catalogs. Now being prepared for researchers in the Albert and Shirley Small Special Collections Library, this amazingly well-preserved set of commercial publications reveals fascinating details of daily life and business practices of the late 19<sup>th</sup> and early 20<sup>th</sup> centuries. This image of a happy family visiting Niagara Falls (presumably in a legally purchased vehicle) is from the Willys-Overland Motor Company.

CHAPTER 1

P/

10

CURIOSITY

CHAPTER 2

P/

26

OBSERVATION

CHAPTER 3

P/

42

EXPERIMENTATION

CHAPTER 4

P/

58

EXPANSION



# WORLD COMED

LETTER FROM THE UNIVERSITY LIBRARIAN



Our theme this year, “Intrepid,” is one I’m sure you will enjoy and that I hope will ignite your thoughts. It was inspired by U.Va. professor and poet Lisa Russ Spaar. Lisa wrote in a higher education blog that the U.Va. Library is “one of the most intrepid library systems in the country.”

“Intrepid” is a powerful, exciting word: Fearless! Ambitious! Risk taking! But on second thought, it can also mean naïve, overconfident, even foolhardy. We have been all of those things, mostly with successful results, occasionally with failures. I believe it’s necessary to embrace both sides of “intrepid” to thrive as a research library in the 21<sup>st</sup> century.

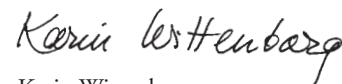
So what comes with being intrepid? We’ve divided this year’s report into four parts: curiosity, observation, experimentation, and expansion. First, curiosity—asking what if we went here or did it this way? What’s the next Big Thing? What would happen if we ... ?

Curiosity leads to observation, and there is plenty to observe in the Library. The digital world is driving wrenching change in scholarly publishing, with dense thickets of copyright and preservation matters, not to mention access and cost issues. Technical progress is creating enormous opportunities ... and enormous challenges. Helping faculty and students with data-intensive research requires increasingly specialized technical ability. And there will never, ever be enough power outlets in our popular study spaces.

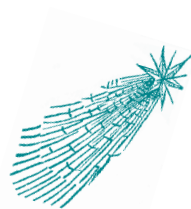
Diving into these challenges means intrepid experimentation with no guarantee of success. This year we cut our website from more than 14,000

pages to just under 100, hoping a smaller, simpler site would suit faculty and students (it did). We tried programs encouraging students to request more research tutorials in person (they didn’t). We experimented with streaming e-reserves from within course management systems and videos from within the online catalog, and launched an effort to eliminate layers of hierarchy to see if staff could work better in teams. We had plenty of hope but no assurances of how things would turn out.

And mostly things did turn out for the better. The final category of this report, “Expansion,” may be the most important because it directly involves you. With your continued support, we can uphold the Library’s best traditions, yet still be intrepid. The U.Va. community is like this every day. It’s a fascinating journey, and I’m glad you are joining us on it.



Karin Wittenborg  
*University Librarian*



# DORRIS STORY

CHAPTER 1

**"SHE CAUGHT TOTO BY THE EAR"** Detail of an illustration by W.W. Denslow from the first edition of *The Wonderful Wizard of Oz* by L. Frank Baum, 1900. This edition, from the Albert and Shirley Small Special Collections Library, also contains an inscription from Baum: "The author presents his compliments to his young friend, Frank VerBeck, Jr., and assures him there are plenty of Wizards like Oz in the world, who may be easily 'discovered' if one keeps his eyes open."





**“... one *can* remain alive long past the usual date of disintegration if one is unafraid of change, insatiable in intellectual curiosity, interested in big things, and happy in small ways.”**

EDITH WHARTON

**METAMORPHOSIS** In this kaleidoscopic collage, we reimagined butterflies and moths “collected from the observations of Mr. John Abbot” in 1797. The originals can be found in the American History Collection of the Tracy W. McGregor Library, in Sir James Edward Smith’s *The natural history of the rarer lepidopterous insects of Georgia*.







**ELEPHANT IN THE ROOM** The curiosity in the Charles L. Brown Science and Engineering Library was Wilma, a giant mammoth constructed entirely of cardboard and black paint. She was made as part of an art project that reimagined U.Va.'s former natural history museum as it was in 1900.

**FLOWERDEW REDUX** The medallion shown on the facing page is just one of the more than 300,000 artifacts from what was once Mary and David Harrison's family farm on the James River. These finds are featured in a major new archaeological exhibition about the farm, whose 17<sup>th</sup>-century name was "Flowerdew Hundred"—Flowerdew being the maiden name of Temperance Flowerdew, the wife of Sir George Yeardley (the first owner of the estate and a colonial governor of Virginia). The rare medallion, minted in 1615, suggests a connection between Yeardley and Maurice of Nassau, Prince of Orange.







**“The important thing is not  
to stop questioning.”**

ALBERT EINSTEIN

**MULTITASKING** Thomas Jefferson would recognize the pen and paper. Headphones, smartphones, and sushi? Maybe not. But anything that helps fuel the bold pursuit of knowledge is welcome in the Library.

**TAYLOR TRADITION** Silhouette of Robert Coleman Taylor (Col 1884, Grad 1884, Law 1886) and his wife, Lillian Gary Taylor. The Taylors made generous donations to the University, including Mrs. Taylor's gift to the Library of her 1,900 volume collection of American fiction, which was featured in the Harrison Institute exhibition, "Bestsellers." Their descendants have carried on this philanthropic tradition by creating the Lillian Gary Taylor Library Scholars Fund, which supports visiting fellows in American literature.



**THE  
SELECTION  
HERE IS OFF  
THE HOOK**



**"U.V.A. CHILLIN' IN AN OCEAN OF KNOWLEDGE"** Students from U.Va.'s McIntire School of Commerce were curious whether a video about the Library would go viral on YouTube. Shot in the libraries and processed with Auto-Tune, the resulting video was a success. See [bit.ly/Sy7RDJ](http://bit.ly/Sy7RDJ)



**OPEN UP THE PAGE  
AND  
KICK THE  
PARTY UP**



**SPECIAL  
COLLECTIONS  
GOT SOME  
MAD RARE  
BOOKS**



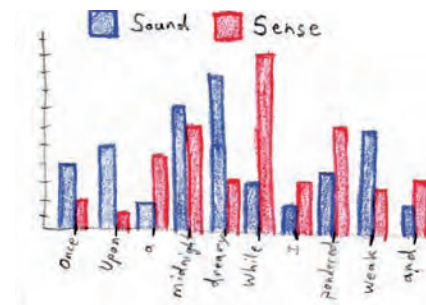
**YOU KNOW  
YOU WANT TO  
READ A BOOK**



**GETTIN' CRUNK  
WITH THE  
CHRONICLES  
OF NARNIA**



ONCE  
UPON  
A  
MIDNIGHT  
DREARY  
WINTER  
EVENING  
I  
PONDERED  
WEAK  
AND  
WEARY



**“MANY A QUAIN AND CURIOUS VOLUME”** The Scholars’ Lab’s “Praxis” program aims to transform how graduate students in the humanities are trained, and that includes having them build a digital project from the ground up. The students created “Prism,” a tool for collective marking of stories or poems. Online readers color-code a text individually, then Prism creates a single visualization, merging everyone’s markings. It is a playful, inviting environment that captures and compares the interpretations of multiple readers of the same text. But Prism is serious, too. One reviewer called it “potentially the beginning of a new research field.” The images below show sketches of possible working Prism visualizations based on Edgar Allan Poe’s “The Raven.”





**CLASSROOM IN A BOX** Using 22 iPads stashed in a movable cart, staff taught an introductory course on how to navigate Library resources. The course covered basic information and services and introduced students to the Library's online catalog and other databases. At the end of the class students were let loose in the stacks with their iPads to check out their first U.Va. Library book.



# CONSIDER WAVNION

CHAPTER 2

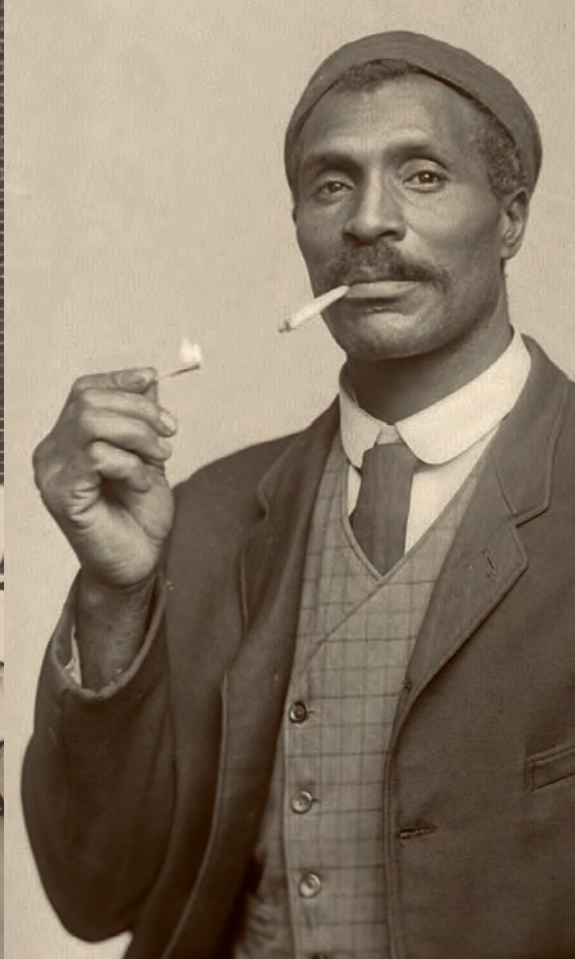
**“WISHES FOR THE COMMON GOOD”** Phillis Wheatley (1753-84) was one of the first African-American poets and the first African-American woman to publish a book. Despite being sold into slavery, Wheatley was celebrated on both sides of the Atlantic. Shown here is a detail from the frontispiece of Wheatley’s 1773 *Poems on Various Subjects, Religious and Moral*, from the Clifton Waller Barrett Library of American Literature in the Albert and Shirley Small Special Collections Library. This portrait is itself the work of an enslaved African-American artist, Scipio Moorhead, to whom Wheatley dedicated a poem in the book.











**FACES OF THE CITY** The Albert and Shirley Small Special Collections Library collaborated with the University's Community Relations Office on an exhibition of rare materials to celebrate the city's 250<sup>th</sup> anniversary. "Charlottesville: 250 Years of History (1762-2012)" included a 1931 photograph of the Charlottesville Fire Department and Municipal Band, images of businesses such as "Rock the Boot Black" in the former African-American neighborhood of Vinegar Hill, and a striking 1909 portrait of Bill Hurley. Hurley was an employee and confidant of three-time Charlottesville mayor J. Samuel McCue and a central figure in the sensational trial of McCue for the murder of his wife Fannie—a crime for which the former mayor was hanged in February, 1905.



# 1969



# 2012



**READ ANY GOOD SIGNS LATELY?** During the tumultuous days this past June, between U.Va. President Teresa Sullivan’s resignation and later reinstatement, the Library’s digital archivists and special collections staff started collecting the signs, tweets, articles, videos, and other materials generated by these unprecedented events. Within two weeks the archive held more than 80,000 tweets, 260 news articles, 120 blog posts, and 56 videos. Meanwhile, the Library’s preservation staff was restoring film footage from another U.Va. protest, the 1969 “coat-and-tie” demonstration for social justice and racial equality.





**A MAGICAL PLACE** Students study in the Tracy W. McGregor Room, which was established by the McGregor Fund of Detroit, Michigan. An extremely popular space for reading and reflection, it prompted one first-year student to tweet, “[OMG], there is a Harry Potter room in our library. UVa is officially my favorite place in the world.”

**A POTSHERD AMONG POTSHERDS** Although standards for the practice of excavation are well established, standards for the description of the finds of archaeological digs are largely nonexistent. The ArchaeoCore Project, developed by the Image Management team at the Fiske Kimball Fine Arts Library, proposes a solution to this problem by creating a platform that standardizes the input of metadata from digs, creating an archive with a common language that can be easily accessed by archaeologists, professors, and art historians from around the globe. The potsherds to the right are ceramic fragments photographed by librarian Lucie Stylianopoulos in Thebes, Greece.





**UNCLE SAM WANTS YOU(R DATA)** Responding to grant requirements from the Federal government (and a desire to combat the Second Law of Thermodynamics), the Library's Scientific Data Consulting Group hosted "Data Management Day" to increase awareness of the complex issues involved in managing data in today's scientific research environment. The event was a huge success, bringing together researchers from across Virginia to discuss solutions and best practices in creating data management plans, including preserving the data for future scholars.







# DIY AERIAL PHOTOGRAPHY

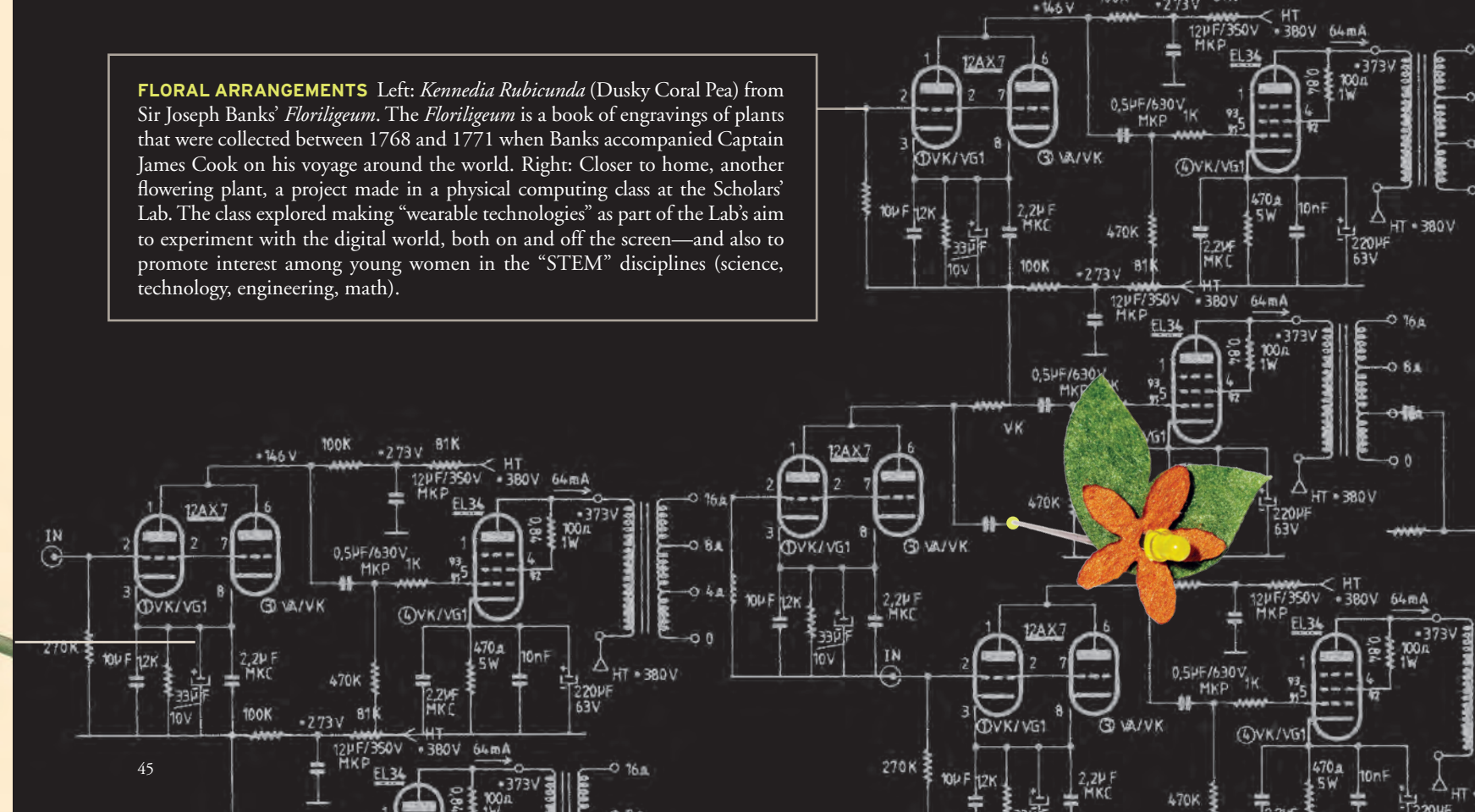
**UP, UP, AND AWAY ...** Staff from the Scholars' Lab hoisted a tethered weather balloon carrying a digital camera hundreds of feet above Clark Hall to demonstrate do-it-yourself aerial photography techniques. The idea was to show how researchers can use inexpensive aerial photography and geographic information systems technology, or GIS, to quickly gather aerial images and data, then stitch it into a map. The camera's image here shows the rooftops of Alderman, Clemons, and the Harrison Institute/Small Special Collections Library.







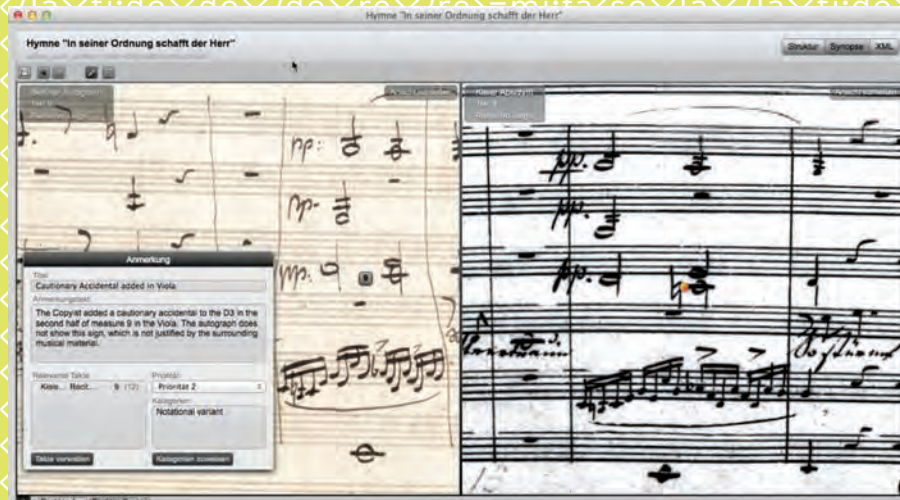
**FLORAL ARRANGEMENTS** Left: *Kennedia Rubicunda* (Dusky Coral Pea) from Sir Joseph Banks' *Floriligeum*. The *Floriligeum* is a book of engravings of plants that were collected between 1768 and 1771 when Banks accompanied Captain James Cook on his voyage around the world. Right: Closer to home, another flowering plant, a project made in a physical computing class at the Scholars' Lab. The class explored making "wearable technologies" as part of the Lab's aim to promote interest among young women in the "STEM" disciplines (science, technology, engineering, math).





**EVERYTHING NEW IS OLD AGAIN** Inspired by similar efforts online, staff from the Library's Communications department took shots of U.Va. scenes from the Holsinger Studio Collection and photographed them in the same setting in the present. The images were especially popular on the Library's Facebook page. Right, "Rub Barker" from October 8, 1914, photographed at Lambeth Field on April 13, 2012.





**"ALL THAT MESSY SCHOLARLY STUFF"** The Music Library's Perry Roland continued work on the Music Encoding Initiative, an international effort to develop a common framework for software that lets scholars visualize and explore the variations of a piece of music in digital form. The project allows customizable, collaborative exploration of a score's written and performed versions.





**“Rule 1: Write stories that please yourself.**

**There is no Rule 2.”**

**WITH A TWIST, NO DOUBT** Detail of a cowboy drawn by William Sydney Porter, known by the pen name O. Henry and famous for his short stories with clever endings. The drawing was one of many in “Beyond Words: The Writer’s Art,” an exhibition in the Albert and Shirley Small Special Collections Library of doodles, sketches, and paintings by famous writers. The quote is from an interview with O. Henry that appeared in the New York Times in April of 1909.



**THE SHAPE OF THINGS TO COME** The Robertson Media Center's Digital Media Lab produced a miniature replica of "The Aviator" (the statue honoring U.Va. alumnus James Rogers McConnell that stands outside Clemons Library), through 3-D printing. The goal with this technology is to team with faculty for applications in engineering, geographic information systems, architecture, archaeology, paleontology, and other fields.





**“... the moment in 1492 when somebody thought *This is it*: the absolute edge of no return, to turn back now and make home or sail irrevocably on and either find land or plunge over the world’s roaring rim.”**

WILLIAM FAULKNER

**UNCHARTED WATERS** The ship is from a woodcut in a letter written by Christopher Columbus to King Ferdinand and Queen Isabella of Spain, *De insulis nuper in mari Indico repertis*, published in *Historia Baetica*, 1494. The flowers are from arrangements in the Charles L. Brown Science and Engineering Library, generously sponsored by Mrs. Ann Lee Brown.





**CREATION STORY** Constructing a state university with national aspirations in a small town in central Virginia was a bold act in its day. Also intrepid: Foregoing the customary chapel-centric approach and placing the library at the head of the Lawn. Left: Illustrations from *Liber chronicarum* (Book of Chronicles), 1493, a history of the world from Biblical creation to 1493. Often known as the “Nuremberg Chronicle,” the book is one of the best documented early printed books and one of the first to successfully integrate illustrations and text. This page: *View of the University of Virginia, Charlottesville and Monticello, taken from Lewis Mountain* (1856).



# WORLD EXPANSION

**THE FAR ENDS OF THE EARTH** Illustration from the Albert and Shirley Small Special Collections Library's magnificent 1513 edition of Claudius Ptolemy's *Geographie*. The details are from Martin Waldseemüller's woodcut of the world surrounded by twelve windheads signifying the winds blowing from each point of the compass.



# We are grateful to all our friends who supported the U.Va. Library in the fiscal year that closed June 30, 2012.

## DONORS

TO ENDOWMENTS OR  
SPECIAL GIFTS  
JULY 1, 2011-JUNE 30, 2012

### \$100,000 AND ABOVE

Ann Lee Saunders Brown +  
Harrison Foundation

### \$10,000-\$99,999

Martin C. Battestin &  
Ruthe R. Battestin @

Raymond C. Bice, Jr. \*  
Caroline Y. Brandt +

Albert H. Small &  
Shirley Small

### \$1,000-\$9,999

The Batir Foundation  
*Patricia Bauman*  
Perry J. Bolton & Aurelia Bolton  
Warren F. Chauncey @  
Margaret Dalton @  
Foundation of the State  
Arboretum of Virginia  
Marilyn June Kreitzburg

The Lamont Family Fund  
*Edward M. Lamont*  
Terry L. Lierman  
National Association of  
Community Health Centers  
John L. Nau III &  
Barbara Elizabeth Nau  
Randolph P. Pillow, M.D. +

Frederick G. Ribble, Ph.D. &  
Anne G. Ribble @  
University of Virginia Council  
for the Arts  
The Honorable Lowell P. Weicker  
Karin Wittenborg @

### \$1-\$999

John C. Ale & Margaret Ryan Ale  
American Rhododendron Society @  
Betswest Foundation  
Carl Merritt Buchholz &  
Karen Dougherty Buchholz  
Marshall R. Church +  
Randolph W. Church, Jr. &  
Lucy C. Church +  
Balfour D. Correll &  
Janice V. Correll

Margaret Perry Daniel &  
Dabney Daniel @  
Jeffrey Robin Elkin &  
Linda R. Elkin  
Paul William Frantz +  
Henry B. Frazier III  
Joan M. Frazier \*  
Michael James Galgano &  
Virginia Del Greco Galgano +  
Laura Gallier, CPA

Garry M. Gaskins &  
Susan C. Gaskins  
Paul G. Halpern @  
Robert Gary Honigman  
Erik D. Laurila +  
Richard W. Miksad &  
Robert W. Miksad @  
Morgan Moore Construction  
Nancy Pressler & Paul Pressler  
Yvonne B. Sears & David A. Sears

Marilyn M. Spence &  
Fred Spence  
Barbara Holmes Stoudt \* @  
Ralph J. Stoudt, Jr. @  
George Southall Vest, Jr. &  
Emily C. Vest +  
Alice M. Wilbur



## UNRESTRICTED

ANNUAL GIVING  
JULY 1, 2011-JUNE 30, 2012

### LIBRARY ROTUNDA SOCIETY: \$2,500 AND ABOVE

#### COLONNADE LEVEL: \$10,000 AND ABOVE

Niklas Schrenck Von Notzing @

#### SERPENTINE LEVEL: \$5,000-\$9,999

The Duke of Omnium Fund +  
*Peter J. Coolidge & Faith Coolidge* +  
Rea Smith Hederman &  
Angela Hederman  
Robert DuBois Hulme @  
Keith Lester Kearney &  
Deborah C. McLean

Gregory A. McCrickard &  
Elizabeth L. McCrickard  
Wendy Nuckols Reed &  
Christopher Claar Reed @  
Mary Lacey Long Wolfe &  
Michael Wolfe +

#### PAVILION LEVEL: \$2,500-\$4,999

Joseph Edward Bonner +  
Donald K. Fry & Joan B. Fry +  
Laura Clements Harris  
William J. Mandel, M.D.  
Mitford Children's Foundation  
*Janice M. Karon*

Jerome C. Philpott &  
Ann Searle Philpott  
Roby Robinson, Jr. &  
Olive Wilson Robinson  
Andrew Francis Westbrook +  
Karin Wittenborg @

### ALDERMAN SOCIETY: \$1,000-\$2,499

Eric A. Angstadt &  
Stefani A. Angstadt-Leto +  
James Edward Anklam  
Gilbert Schuyler Bahn @  
Virginia Barber  
Gary Wickens Barone, M.D. &  
Claudia Marie Protzman  
Barone +  
William Jeffrey Booker &  
Rhonda Collins Booker  
Bernard T. Bress +  
Robert P. Buford &  
Anne W. Buford +  
Anahi A. Coughlin &  
Timothy Paul Coughlin  
Ashley Leigh Delp  
Ralph DeMarco  
Elizabeth Thompson Drum, M.D.  
& Marc T. Dinardo +  
Marilyn C. Eubank +  
Anne Garland Farrell &  
Thomas F. Farrell II @  
Henry B. Frazier III  
Joan M. Frazier \*  
Claire W. Gargalli @  
Michael L. Gassmann &  
Cynthia Ann Lewis @

Ross Cary Goldstein &  
Catherine Hess Goldstein  
Bradley H. Gunter, Ph.D. &  
Meredith Strohm Gunter, Ph.D. @  
Ann F. Hammersmith  
James Bryant Hebenstreit &  
Marilyn Bartlett Hebenstreit  
James Leon Hoban, Jr.  
L. Peyton Humphrey &  
A. Cherie Humphrey +  
John David Johnson  
Alexander Steven Katzenberg III  
Theresa M. Lynch &  
Richard Bailey Lynch  
Wickliffe Sanford Lyne, Jr. &  
Elizabeth Perkins Ward Lyne  
John J. Markham &  
Deb Markham @  
Christopher J. Meade &  
Carolyn Phipps Meade  
Thomas James Minarcik &  
Susan M. Minarcik  
J. Kent Morrison, Ph.D.  
Theodore P. Pearce &  
Mindy Pearce  
Randolph P. Pillow, M.D. +  
Thomas Ransone Price, M.D. +

David Batiste Quanbeck @  
Amy R. Rentz & Paul V. Rentz  
Tucker M. Respass & Lin Respass  
Frederick G. Ribble, Ph.D. &  
Anne G. Ribble +  
James E. Roberts +  
John D. Schaperkotter &  
Cary W. Schaperkotter @  
Joel D. Shapiro  
Holly C. Shulman &  
John C. A. Stagg @  
Irwin H. Slater, M.D. +  
Rosamond Parker Smythe &  
Daniel Thompson Smythe  
Wallace Stettinius &  
Mary Gray Stettinius  
President Teresa A. Sullivan &  
Douglas Laycock  
John R. Watson, Jr. &  
Sheryl B. Watson @  
Kenneth G. Whyburn +

### PATRON ASSOCIATE: \$500-\$999

Sandra S. Alexander  
Lucien L. Bass III @  
John M. Baxter &  
Shannon Casey Baxter +  
Dara P. Behan  
George William Braun  
J. Stewart Bryan III & Lisa-  
Margaret Stevenson Bryan @  
Peter J. Buck & Carson Buck +  
Robert Gordon Byron &  
Cheryl Thompson Byron @  
William Davidson Call &  
Parker N. Call @  
Michael J. Castine III, M.D. &  
Brigette D. Castine  
Charles Barton Ceisel +

Whitney W. Cobey &  
Alexander D. Cobey @  
William Morgan Cochran, Jr. @  
Eugene Carl Culbertson, M.D. &  
Mildred W. Culbertson  
John Robert Cuti  
Elisa A. Deadman +  
Royce Michael Earnest  
Charles T. Forrester III @  
Andrew Ziet Glickman &  
Julie Elisabeth Cohen +  
Autumn Graves +  
Hugh B. Hammett, Ph.D.  
Jerome S. Handler +  
Daniel Seth Herzfeld &  
Deborah M. Herzfeld

Sherry Bartholomew Holtzclaw  
Kirk Mckim Hudson &  
Sandra P. Hudson  
R. Bruce Hunter  
Andrew V. Kean &  
Cynthia C. Kean  
John G. Kennedy Foundation  
*Connie K. Darbyshire &  
Glen M. Darbyshire*  
William J. Kehoe  
Kenneth R. Lee, M.D. &  
Kathleen P. Lee +  
Gregory A. LePeter  
Albert P. Lindemann, Jr. &  
Anne Lindemann @  
Alastair Sinclair MacDonald @

Ustun Oral  
The Order of the Crown  
in America  
*Nancy J. Bolton*  
Valerie D. Pearce  
Robert Hoke Perkins, Jr. @  
John Julian Pickeral III, M.D. +  
Ballard F. Pinkard, Jr. &  
Nancy B. Pinkard  
Leslie S. Pitcher &  
John Shackford Pitcher +  
Elizabeth Anne Powell +  
Richard A. Roberts  
Roseann Romito, M.D.  
James Francis Shigley @  
Charles Holden Smith, Jr. @

Justin Bayly Smith &  
Suzanne Smith  
Thomas C. Spavins &  
Judith Herman Spavins +  
Robert D. Sweeney @  
John Alexander Thacker, Jr.  
William McIlwaine Thompson,  
Jr. & Elsie Wilson Thompson  
Margaret H. Underwood  
Thomas B. Wheeler, M.D.  
Robert A. Whisnant, M.D. &  
Michelle D. Whisnant +  
Catherine P. Wood  
William H. Wood &  
Carol S. Wood +

**SPONSORING ASSOCIATE: \$250-\$499**

Anonymous (1)  
 Henry J. Abraham & Mildred K. Abraham + Margaret Louise Adams  
 Claire Liedtke Alexander  
 Thomas Field Armstrong & Janice C. Fennell Armstrong  
 Burke Baker III & Carole Gilkeson Baker @  
 Laura Adrienne Misner Baker + James Edwin Ballowe, Jr. + David K. Barry & Joanne M. Hepburn  
 Michael Francis Barry & Lee Newman Barry @  
 Philip James Baum, D.D.S. & Susan Duck Baum @  
 Lawrence Keith Beaston  
 Warren W. Behan +  
 Cheston Berlin & Anne R. Berlin @

Thomas Edgar Carbonneau  
 Robert Thomas Carey & Tasneem Baten Carey  
 Elizabeth G. Cauthen  
 Kent J. Christian @  
 Gary Christopher Comfort +  
 G. Richard Connolly & Margaret F. Connolly  
 Thomas I. Crowell  
 Sara Penn Daniel  
 William R. Easton @  
 Jason I. Eckford, Jr.  
 Marjorie G. Fitton +  
 Page Moss Fletcher, M.D. & Shannon Manning Fletcher @  
 Leslie H. Friedman @  
 Melinda Byrd Frierson & Henry F. Frierson, Jr., M.D. @  
 Jennifer Lynne Getz  
 John R. Gilchrist @  
 Patrick Bolton Gregory @

V. Dave Griles @  
 Baird Hansen  
 H. Baird Hansen  
 Edward Harkness & Jianxia Wang  
 Felicia R. Hendrix & John T. Hendrix +  
 John R. Holloran +  
 David G. Hubby & Sally Hubby  
 F. Gregory Hudson +  
 John David Hummel, M.D. & Louise M. Hummel  
 Joseph F. Johnston, Jr.  
 Juhan John Kim, D.D.S.  
 Mark J. Kington & Ann A. Kington +  
 Antony Bradley Klapper  
 Mitchell Jay Koval +  
 Paul Pressley Langley @  
 Christine P. Larson  
 Pamela Nadine Lipscomb & Ryan P. Buchanan

Donald L. McGrady @  
 Lauren Grossman Mead  
 Roger F. Millay & Robin Scott Millay  
 Alexander P. Moncure  
 John Anthony Mongeluzzi +  
 Jonathan Quentin Morgan +  
 Mary Regina Niehaus  
 Neil David Olson @  
 Susan Kim Otten  
 Alyce McCallister Outlaw +  
 Gaylon M. Parsons  
 John A. Pilcher, Jr., M.D. +  
 Kelvin Monroe Pollard  
 Reuben McCorkle Rainey & Marilyn Sue Rainey  
 Elizabeth C. Rider & Allen B. Rider III  
 Jane W. Rotch  
 Catherine Fleury Ryan +  
 Robert David Schneider

Shelah Keith Kane Scott @  
 Theresa Fremont Seem & John E. Seem  
 David M. Shaw & Mary B. Shaw  
 Max O. Stephenson, Jr., Ph.D. & Christina E. Stephenson  
 Kailun Sun  
 Earl A. Thornton @  
 Peter M. Tobias, Ph.D. @  
 Britton E. Trice  
 Maya Higashi Wakana  
 Michael E. Wells +  
 Gary Michael Wessel  
 Madelyn F. Wessel @  
 David R. Whitesell  
 Morton C. Wilhelm, M.D.  
 Michael E. Williams, M.D. & Rebecca Sue Williams @  
 Samuel H. Williams, Jr. \* +  
 Stephen J. Zipp

**SUPPORTING ASSOCIATE: \$100-\$249**

Anonymous (2)  
 Eleanor P. Abbot  
 Lou V. Abbott  
 William Philip Abrams @  
 Janet E. Adams  
 Alison W. Adkins  
 Steven John Agosti, M.D. & Carla Lynn Gibson Agosti +  
 Margaret Claire Alexander +  
 Elizabeth Alford  
 Neill H. Alford III  
 Anne E. Allen  
 Thomas M. Ammons III  
 Christine Neuberger Amrhine  
 Robert Steven Anderson  
 Lorrie A. Andrew-Spear & Curt G. Spear, Jr. +  
 Stephen J. Andrijauskas  
 Richard H. Antell  
 Allan C. Armstrong & Diane R. Armstrong  
 Mark William Arnold, M.D. @  
 Paul Alexander Atkins, Jr. @  
 Susan Loble Auerhan @  
 Edwin P. Bailey @  
 Joe Edmond Bailey  
 E. Gray Baird  
 Diane Stout Bales & James A. Bales  
 Richard M. Bange III, Esq.

Hubert Holmes Barber, Jr. & Annette Lowe Barber  
 Elaine Wirt Barnes +  
 Jennifer L. G. Barnes  
 Robert Fielder Barnes, Jr., D.D.S.  
 Robert W. Barnwell @  
 Judith R. Baroody, Ph.D.  
 Ronald E. Becker  
 Frank C. Bedell +  
 Peter Benoit  
 Sol Joseph Bermann  
 Walter E. Birch +  
 David S. Birdsell +  
 Blue Whale Books  
 Archie Milburn Bolster & Ann Matthews Bolster  
 Sara Murphey Bossong  
 Karima I.A. Bouchenafa  
 Ann Lloyd Breeden  
 James Otis Breeden  
 Lance G. Brockmeier  
 Leigh Buckner III  
 George P. Burgwyn IV @  
 Barbara Jean Butler, M.D. @  
 Clifford R. Buys & Jeanette Buys @  
 John Peter Byrne & Karen Sue Byrne  
 Geoffrey F. Caldwell  
 James Edward Cammisa

Karla Haemmerlein Carl  
 Mary Heath Carpenter  
 Thomas Oliver Carpenter, M.D. & Caren Gundberg Carpenter  
 Susan C. Carr  
 Trace H. Carson  
 George M. Carver  
 Salvador Anthony Casente, Jr.  
 Catherine M. Casteel  
 Regan Scott Chambers +  
 William James Chen, Jr. & Rebecca E. Chen  
 John T. Chesser III +  
 Kathryn Sargent Ciffolillo  
 Robert Bruce Clardy  
 Elizabeth Wildenthal Cohen  
 Libby Okun Cohen & Ralph Cohen  
 William Emmet Coleman +  
 Margaret Theresa Compton  
 Michael Joseph Conway  
 Nicholas Beemer Couper, M.D.  
 Thomas Randolph Cox, Jr.  
 Richard S. Crampton, M.D. & Julia Crampton  
 Thomas B. Crisp IV  
 A. Eugene Crotty  
 John Lee Daugherty @  
 Martha Orr Davenport  
 James Boyd Davis

James E. Davis III @  
 Martin R. Davis & Jane Jamison Davis  
 Tracy Barger de Jong +  
 Charles Tilghman Dent +  
 Amit R. Desai  
 Susan Ritchie Devine  
 Dean F. Dietrich  
 Lynne Barry Dolan  
 Allen Gunn Dorin, Jr. @  
 Michael Edward Dougherty  
 Robert William Duck, M.D. & Leda Broderick Duck, M.D. +  
 Julia C. Dudley +  
 Pamela S. Duff, M.D. & Karl L. Duff  
 Timothy M. Duffey & Robin Mitchell @  
 Katherine S. Duncan  
 Thomas O. Dunlap III  
 Severn Parker Costin Duvall \* @  
 Helen Smith Edens  
 Jamie Robert Eisner & Alice S. Eisner  
 Robert Alan Emery  
 David Alan Emmerling, Ed.D.  
 Marshall Solomon Epstein +  
 James W. Eyler & Kel-Ann Sheldon Eyler, Ph.D.  
 Janet L. Farber @

Gail M. Farfel  
 Charles R. Farkas & Edit M. Farkas +  
 Scott A. Faust & Joanne L. Faust +  
 Dale Richard Felker II & Janice Wacker Felker  
 Thomas F. Felton & Laurie Howard Felton  
 Nicholas P. Feucht  
 Elizabeth W. Flanagan  
 John Everett Foster  
 William H. Foulk, Jr. @  
 Sherri Lynn Davis Fowler & Brian F. Fowler  
 Nancy U. Frank +  
 Franklin Gilliam Rare Books  
*Mary Cooper Gilliam*  
 Casey C. Franko  
 Carolyn Gills Frazier & Allie W. Frazier, Jr. @  
 Leslie Gignoux Fritz & Scott Fritz  
 Michael James Galgano & Virginia Del Greco Galgano +  
 Marjorie Joan Garmey & Melinda J. Baumann @  
 Dolly Grey Garrison  
 Robert F. German, Jr.  
 Dwight Joseph Gibbs & Amanda Dory  
 Ashley George Gill @



Pamela Jean Gilmer @  
Ruth Scott Glass  
Laura Melendy Gogal &  
David Gogal +  
Mark Andrew Goodin  
Mary Elaine Gresham +  
Arthur Grimbball, M.D.  
Margaret M. Grove  
Jane R. Gunnell  
Robert Joseph Gustavson, Jr. &  
Carol Werner Gustavson  
Debra Suzanne Haas +  
Mark T. Hackman +  
William Eugene Haddix, Jr. &  
Carol J. Turbett Haddix  
Catherine Kenney Hale  
Ann Davis Haley  
Douglas Edward Hamel &  
Janet Palmer Hamel  
Leroy Reynolds Hamlett, Jr. &  
Patricia Bromm Hamlett  
Jeanne M. Hammer +  
Donna Goodwin Hankins  
Huntington T. Hapworth, M.D.  
& Adele S. Hapworth +  
Ann Snyder Harrod +  
Eleanor J. Harvey  
Lisa A. Heaton, Ph.D. +  
Stephan Andrew Heinlein  
Amy B. Heinrich  
R. Page Henley, Jr. &  
Jane Sale Henley @

Frank S. Hennessy  
Jack C. Herndon, Jr.  
Virginia Caldwell Hibbs  
Kimberly A. Hilsee  
Don Hirsch & Mary P. Hirsch  
Iris H. Hoener  
Charlton G Holland III  
Andrew Burgess Hough @  
Laura Leckie Howard  
William Love Hudgins, Jr. @  
Ted Humphrey  
Forrest Walker Hunter &  
Susan Zsamar Hunter @  
Robert Kirk Jackson, M.D. &  
Carolyn R. Jackson  
William Alexander Jackson @  
Ronald D. Japha &  
Meryl J. Japha @  
Janet King Jemison  
Richard J. Joachim, D.D.S. &  
Beverly W. Joachim  
Emilie K. Johnson  
John Mann Johnson  
Robert Mark Johnson  
Everett Arvil Jones III &  
Marian Ali Jones  
Rayford Scott Jones, M.D.  
John Lawrence Jordan, Jr.  
Prakash Kamath  
Brian Charles Kane  
Robert J. Kane & Jean S. Kane  
Virginie Y. Kanner

Thomas E. Kantor, M.D.  
Marye Dorsey Kellermann  
Brian Francis Kelley  
Janet Carter Kennedy +  
Sally P. Kennedy +  
Margaret M. Kern +  
Evans L. King, Sr.  
James Spalt King & Jill Marie King  
Thomas Michael Knasel &  
Anne L. Knasel @  
Katherine Fulghum Knopf +  
John D. Koester +  
John J. Kraljevich, Jr.  
Geraldine D. Kruger +  
Nancy Stuart Lackey  
Nancy Lampton  
Chiswell Dabney Langhorne, Jr.  
Mary Kay Lanzillotta,  
FAIA, LEED AP  
Sloane Wickerhauser Lederer +  
Richard H. Lee & Kathryn M. Lee  
Edward George Lengel  
Jacob C. Levenson  
G. John Levin, Jr. &  
Mary Jean Redon Levin  
Patricia M. Levin  
Bradley R. Lindgren  
William Marsh Little  
Wm. A. Little  
Brian A. Magoon  
Rebecca Maguire &  
David T. Maguire

Robert Maidment +  
Joseph Ramsey Martin, Jr., Ph.D.  
& Joan C. Martin @  
Thomas A. Mason &  
Christine Guyonneau  
Elizabeth Rose Siobhan  
Peaslee Masur  
Bernard D. Mayes  
Thomas Michael McCall \* +  
John M. McCullough  
Stephen Richard McCullough &  
Amy Estes McCullough  
Sean William McGee  
Patricia Ann McMurray  
Marvin H. McMurrey III  
John E. McNish &  
Joan R. McNish +  
Catherine Hendricks McSorley &  
John W. McSorley  
Margo L. Meiman &  
Andrew D. Meiman  
Elizabeth Homes Meredith, M.D. +  
Donna R. Miller  
Elizabeth C. Millett  
Jane Colony Mills & Ian S. Mills  
Stephen Elias Milo +  
Blaise Montandon &  
Marlene Montandon  
Ariadne Santiago Montare  
Elizabeth Anne Moriarty &  
John Andrew Hicks  
Jonathan C. Morris @

Richard C. Morris, M.D. &  
Susan Nelson Morris @  
Adam Robert Moyer  
Courtney Payne Mudd +  
Priscilla Hobbs Muhlenkamp &  
Matthew Joseph Muhlenkamp +  
Michael Earl Murphy  
William R. Murray,  
USMC (Ret.) @  
Katharine Palmer Murtaugh  
Carey Levine Nathan, M.D.  
Michael C. Natrella  
Jean C. Newsom  
Christy N. Nilsen +  
Barby Patterson Nixon &  
William R. Nixon, Jr., Ph.D.  
Lindsay C. Nolting  
Blaine E. Norum &  
Jean Lightner Norum  
Shirlee A. Nuffer &  
Joseph Nuffer II +  
Sam Nystrom  
Jeffrey O'Connell @  
Daniel J. O'Connor III @  
Sara Towery O'Hara &  
Charles Joseph O'Hara  
Daniel F. O'Keefe, Jr. &  
Sandra S. O'Keefe @  
Charles M. Olmsted +  
Robert M. O'Neil &  
Karen E. O'Neil @  
Gary Edward Onken

Arthur Marion Osteen &  
Mary B. Allen Osteen  
Beply Landrum Owen  
Karen Van Neste Owen +  
Brooke Owens  
Peter Paccione  
Courtenay Padgett  
Mark Cartwright Pilkinton +  
Robert Lin Poff @  
Eugene P. Pollock &  
Mary W. Pollock  
Robert J. Pollyea  
William Pinckney Pope &  
Christina Hoffman  
Peter James Potter  
Ronald A. Powell  
George William Powers, Jr. @  
John C. Priddy & Anita Priddy  
Mercedes Q. Procaccini &  
Nicholas J. Procaccini, M.D.  
Gregory Milton Pulis &  
Kerrin K. Clark  
Julie Lynn Rasmussen  
Theresa Bain Recuperero, D.D.S. +  
William L. Redd, Jr.  
Esther Rachel Redmount  
Christina A. Richardson &  
David Lee Richardson +  
Louis Joseph Richman, Jr.  
Julia Gilkeson Ritenour  
Rachael D. Roan  
Jeffrey Todd Robinette

James Henry Robinson III  
Richard Allen Robinson  
Denise Elizabeth Rocca &  
Andrew Radu Gladin  
J. Ryan Rose +  
Christopher Michael Ross +  
Allen Kent Rostron  
Laura Susan Funkhouser Ruml,  
M.D. & Treadwell Ruml  
James F. Runckel  
Claudia J. Russell  
Carleton Rutledge, Jr.  
Patrick L. Ryan & Mika L. Ryan  
Barbara H. Ryland  
Charles Herbert Sadtler  
Ramon Anthony Salgado &  
Elizabeth M. R. Salgado +  
Wilton T. Sanders, Jr. &  
Virginia J. Sanders +  
Scott Alden Sandridge +  
Paige England Santmyer  
James Franklin Saunders III  
Laura L. Schefflow  
Arthur I. Schulman &  
Gayle M. Schulman +  
Tracy Anne Scriba  
Kelly Kay Sundberg Seaman &  
David M. Seaman  
Kathryn Wolf Sekeres  
Donald Eugene Selby, Jr. &  
Barbara S. Selby  
James R. Self & Charlotte Self @

Jeffrey Glenn Shelden  
Lisa Anne Sheppard +  
Charles Holland Shorley  
Joseph Gottlieb Simmons @  
Thomas H. Simon  
Edmund G. Simpson &  
Virginia A. Simpson @  
Margaret Isabel Skelley  
Alexis E. Skotzko  
Edward R. Slaughter, Jr. &  
Anne L. Slaughter +  
Hampden H. Smith III @  
Holly L. Smith  
Jane Lucas Smith @  
Troy Alvin Smith  
Nigel Sefton Smyth &  
Linda Keller Smyth  
Baird Snyder V  
Warren S. Sockwell, Jr. +  
Scott Adam Somer  
William S. Spotswood, Jr. @  
Samuel Arrington St. Clair  
Susan Klein Stadsklev  
Sean P. M. Starke +  
Alan L. Steffen @  
Richard F. Sterba  
Allison Ferrill Stiller @  
John Amos Stillwell &  
Grace M. Stillwell  
Joseph P. Stinnett @  
Virginia Harmon Stokes @  
Anne C. Stone

Katheryn Kennedy Sublette  
Emily M. Sullivan  
G. Thomas Tanselle +  
Stephen G. Tashiro  
Anne Virginia Gibson Tausch  
John Eric Tavss  
Sally S. Telford &  
George B. Telford, Jr. \*  
Jeffrey Howard Thomas  
William Griffith Thomas III +  
Kenneth C. Thompson &  
Jackie Thompson  
Karen Marie Tindal +  
Mary Shackelford Tise  
Beth Ann Todd, Ph.D. +  
Rebecca S. Tolliver &  
Michael Keith Tolliver  
Thomas Winslow Trainor  
Kenneth B. Trousdel, Jr.  
Edward M. Turner III &  
Lora Ashby Turner  
Chuck Udell  
Nancy Clarke Verdirame &  
Joseph Lorenzo Verdirame, M.D.  
George Southall Vest, Jr. &  
Emily C. Vest +  
Dan O. Via, Jr. &  
Margaret Bateman Via  
Barbara Jay Nelson Videira @  
Susan Dickerson Vinisky &  
S. Andrew Vinisky  
Matthew John Vlissides, Jr.

K. K. Wallace, Jr., M.D. &  
Patricia L. Wallace  
Margaret Knox Wallace  
James C. Waring, Jr., D.D.S. &  
Barbara Masnik Waring  
Nicholas A. Wasko  
Susan Lynn Watt  
Jill Winicki Weeter &  
Aaron Kent Weeter  
Marvin C. Weiss, M.D., Ph.D.  
Allen D. K. White  
Martha M. White +  
Evan Wilkoff &  
Kim Ann Ashwell Wilkoff +  
D. Alan Williams &  
Llwanda K. Williams +  
Richard L. Winston  
David A. Winter &  
Faith A. Winter  
Theodore Wolff, M.D.  
James E. Wood, Jr. +  
Amy Barnes Wright  
Craig E. Wynn  
Laura Knowlton Yanchenko  
Robert Yuan-che Yeh  
Charles A. Young III  
Robert E. Young &  
Lee Arnett Young +  
Robert Winters Young &  
Kathryn Anne Young  
Nia N. Zalamea  
Roberta Schlag Zapple &  
Peter James Zapple +

**LIBRARY ASSOCIATE: \$1-\$99**

Anonymous (3)	Evangelina Balmori +	Thomas H. Blackburn, D.D.S.	Geoffrey L. Brice @	Kathy E. Carter &	David Curry &	Linda Anne Bernot Dugan	Jane Brown Foster	Timothy Haslam Gray	Mahlon Henderson
Joseph Clark Adams	Martha Lucas Bar	Bettina B. Blackford +	James John Brickley, Jr.	Mack T. Ruffin IV +	Milene Roca Curry	Christian Y. Dupont +	Sue W. Foster &	Marye Griffith +	Charles F. Herreshoff @
Tolulope Oladipo Aganga-	Scott E. Barat	Sheila M. Blackford &	Barbara Rosanne Brindle	Donald L. Charlebois &	Carol G. Cutler +	Judith B. Dutterer &	Robert L. Foster, Sr.	Dorys C. Grover	Andrea Cobrin Hester
Williams &	Robin Bruce Barnes &	Douglas K. Bloor	Michael Adam Britt	Donna Lee Charlebois	Jan Connors Dagenhart	Dennis Dutterer	Jacquelyn Ann Fox-Good &	Ellen Herr Guptill	John Jeffrey Hickok @
Oghenekome Aganga-Williams	Ann Lee Bressler	Sam Berry Blair, Jr. &	Anthony V. Broccoli	Kimberly Merkel Chen @	Nancy B. Dalzell	Kathryn R. Waite Fleischman	Timothy S. Good +	S.D. Hagedon &	Feroline Burrage Higginson
Charlotte A. Alexander	Sara L. Barnes +	Pam Warnock Blair @	Darlene Dollar Brock &	Eugene M. Childs, Jr. @	Cecile Vernier Danehy	Dwyer	Michael A. Franklin +	Doris M. Hagedon	Jeffrey P. Hill
Barry Paul Allen	Peter M. Barres +	John C. Blaney &	Edward Brock +	Marc Bedke Christensen	Patricia Y. Daniel	Byrd Eastham	Linda B. Frazee	Kieran Walsh Hahne	Patrick Hillegass
Timothy Key Allen	Diane Lear Barwick &	Kathleen Lynch	Nathan Stephen Brock &	Beth Christy Ciche	Bryna W. Darling	Milton T. Edgerton, Jr., M.D.	Sharon Mullen Frazier &	Robert E. Haimes	Cordelia Sterling Bacher
Eric Robert Allison &	Brooks Barwick	Jennifer Nashorn Blankenship	Liane C.V. Brock	Jean Marie Tuomey Cleary	Harold O. Davidson &	Jason Jamohl Elam	W. Michael Frazier	David A. Hale	Hinckley
Kristin LaBarre Allison +	Jennifer Ellen Bates	David L. Blauch &	James F. Brooke III, USN (Ret.)	Jeffrey R. Clements &	Georgia S. Davidson +	Allison L. Elias	Karen Meekins Friel	John Devin Haley	Leo Phillip Hirrel
Kathleen McGinn Almy	Elizabeth Pope Battaglia	Denise A. Blauch	& Margaret W. Brooke +	Lee Jerome Clements, Ph.D.	James S. Davidson &	Mary Tyler Elias +	Garry Andre Victor Gabison	William Harvey Hall, M.D.	Susan T. Hitchcock, Ph.D. &
Craig D. Anderson +	Angela Parrish Batten	Anne Hanahan Blessing	Thomas W. Brooks	Lynda Fuller Clendenning &	Cindy R. Davidson	Mary McKeone Ellmore	Mary Alice Garber @	Charles Raymond Halstead	David Wayne Watkins III
Janet M. Anderson	Eric S. Bauman	Keith D. Bliley	Stephen F. Brown &	Robert Lynn Fuller	Rae L. Davidson	Ronald B. Emery	AnnMarie L. Gardner	Joshua Paul Hanbury &	Steven Harold Hochman +
Kathleen Anderson	Russell William Baxter &	Blue Ridge Committee of	Catherine K. Brown	Mary E. Colmery	Rebecca Ellen Anthony Davis	William H. Emory	Susan P. Garrett +	Elizabeth S. Hanbury	Cynthia H. Hoehler-Fatton @
Martha M. Anderson +	Sharon Kenneally Baxter	the National Society of the	James Allen Brown &	Mary Jane Conger +	Margaret M. Dawe	Joseph John ESSID, Jr. +	Douglas McCarley Garrou	Patricia Driver Hanger +	Bruce Leslie Holden
Sallie Joyce Via Anderson	Theresa Marie Beiner	Colonial Dames of America	Emily M. Brown	Sharon McKeon Connolly	David Dean	Charles A. Estep @	Mark S. Gaylor	John Francis Hanuschak	Josephine J. Holt
Ed Andrews	Peter A. Beling	Gerald G. Blythe +	Michael Wilson Bruening	Elsa Ruth Conrad	David N. Decker	Randall Ethier &	Narra Briscoe Geisinger	Virginia Wayne Harbaugh	Andrew H. Hook @
Kathleen K. Ansell, Ph.D. &	Beverly Flowers Bell	Lindsey J. Benson Blythe	Donna Ruth Buck	Patrick John Cook, Jr.	Robert Gerard Deily	Hui-Chung Ethier	Carey Williams Getis	Michael Halsey Harbour &	Thomas F. Horan
Edgar Ansell	Robert B. Belton &	Eve Lindemuth Bodeux	Donna Ruth Buck	Jane Gemmell Cooper	Karen Mills DeJarnette &	John Richard Eubanks, Jr.	Stuart Alan Gewirtzman	Nancy Allen Rutland	Brewer Tate Horton III
G. Christopher Arnold	Celia Munro Belton	John Andrew Bodnar &	Jessica Belue Buckley &	Andrew Corso & Megan S. Corso	Brent Dickens DeJarnette	Ellen F. Falci	Jane Johnson Gherardi	Anne Reed Harper +	Kathryn Gwinn Houk
Rosemary C. Atkinson &	Janna Marie Langemo Benston	Caroline Bodnar	David Timothy Buckley	Kevin Anthony Coyne &	Tracy Marie DeJesus	Lesa Arnoe Farless	Benjamin J. Gibson III	Karen E. Hart, M.D.	A.E. Dick Howard & Mary A.
Rt. Rev. Robert P. Atkinson *	John Graham Anderson Benton	Karen A. Boeschstein	Fred Buehler +	Elizabeth Loux Pinkney Coyne	Kimberly Moyer Dellinger	Courtney E. Fay	Mark Bennett Gillespie	Jessica Ward Hartung &	Reuman-Redenbaugh Howard
Edward Eugene Austen &	Frederick L. Bergert &	Christopher L. Bonadies &	Kevin John Burke	John Stephens Creel, Jr.	John E. Dennard +	Ellen Klemm Feeney	Paul Gilson & Pat S. Gilson	Brian Hartung	Shaoyi Hu
Dede McConagha Austen	Sylvia H. Bergert	Jody Bonadies	Nathan D. Burlingame &	Lawrence M. Croft &	Christa M. Doerwaldt	Devon C. Fetterman	April Karen Spangler Ginnings &	Robert P. Haseltine	Gary M. Hubble
Robert Jackson Austin	Benjamin Joseph Birge &	Willis Eugene Bush @	Corenia Riley Burlingame, Esq.	Susan B. Croft	Alvin Perez Donato +	Corinne N. Fiagome	Gordon Edward Ginnings	Emily A. Hattwick	Joni Burdette Hubli
Franklin V. Aylor &	Teresa M. Birge	Elizabeth Vajs Boren	Robert Dixon Cross, M.D.	Robert B. Croft	Caroline C. Donovan	Jonathan D. Field	Evelyn Marr Glazier @	Laura Endicott Hayden &	Jeffrey M. Huff
Frances J. Aylor @	Diane D. Bisgaier	Raymond Vance Bowers	Kim Popwell Crumbley	Robert Dixon Cross, M.D.	Karen Lynn Donovan	Stephen Paul Donovan &	William C. Glick &	John Kelly Hayden	Sarah Jean Huggins +
David E. Bagby, Jr.	Elizabeth D. Bishop +	Earl Dennis Bradley @	Thomas David Crute III	Kim Popwell Crumbley	Stephen Paul Donovan &	Susan M. Olson	Whitney M. Hudson	Rea S. Hederman, Jr. &	Clifford T. Hughes +
William Delavan Baldwin II	John David Bishop +	Jerry H. Brent	Andrew E. Curley	Thomas David Crute III	Susan M. Olson	Derek A. Douglas	Allen W. Flannagan, Jr.	Caryn Blythe Hederman	J. D. Hunley
Mary Moorhead Ball	Tory M. Bishop +	Shawn Stewart Brevard &	Abigail Flicker Curran	Andrew E. Curley	Derek A. Douglas	Thierry Johnson Drapanas	Allen W. Flannagan, Jr.	Lance A. Hedrick	Janie Gray Hunter
		David Emery Brevard		Michael Stirling Campbell	Melanie Anne Duerr	Melanie Anne Duerr	Charles H. Foster &	Katherine Mary Helgerson +	Kathleen F.G. Hutton +
							Robin H. Foster	Carolyn Mary Chiginsky Henderson	Joel Lee Iglehart +



Anne M. Innes	Emily A. Kern @	Reba Lamont Lindsey	Sheryl K. Mays	John J. Mulhern &	Carolyn Neltner Palmer	Sumpter T. Priddy III	Amy Kathleen Rogers &	Peter Ewing Scott +	Robert S. Smith
Davar M. Irvani	Atul Khosla	Robert T. Linger, Jr.	Rebecca Schmidt Mazzarella &	Mary M. Mulhern	Christine Gashi Parrott +	Elaine Kay Priest	Alex D. Bukoski	Thomas Arthur Scott, Jr. +	Stephen Earl Smith
Leonard R. Izzo	Deborah Wylie Kight	Maurice D. Linkous, M.D. &	Mario R. Mazzarella	Carla A. Mullen	Harold S. Parrott	Timothy Lawrence Prince, M.D. +	John M. Rogers +	Sarah Isabelle Scruggs	Andrew L. Snelson
Barbara A. Jackson	Twyla G. Kitts	Laura E. Linkous	William McCausland	William Patrick Mulligan &	Kenneth Sale Patterson	Julia Anne Dean Putrich	Elizabeth C. Rose	Robert D. Selim @	George N. Snyder
Barnett C. Jackson, Jr. &	Chiyo Kobayashi	Warren H. Linkous &	Elmer Milton McDonald, Jr.	Allison Smith Mulligan	Amy Kellert Payette	Catherine E. Race +	Laura Alderman Rost @	Andrew T. Semmelman	Catherine Trybul Sontheimer
Marilyn J. Jackson	Brian J. Kolodne +	Patricia R. Linkous	Kenneth McDonald, Jr.	Leslie Juliana Naranjo	Helen Lester Payne &	Louella Randall	Laura L. Rothenberg	Elizabeth Goetz Serow &	Kathryn D. Soule
Terrence G. Jackson	Douglas James Konoppelko	Allison Linney +	Philip F. McEldowney +	James F. Nash, Ph.D. +	Christopher John Payne	Joseph Kim Ranney @	Sara D. Rothenberger	William J. Serow	Ann Walker Sparks
Elizabeth Powell James &	Monica R. Kostreba	Robert J. Lloyd III +	Robert L. McGuinness +	Dina Nawas	John William Peffer	Kathryn E. Reddin	Alan Rountree +	Stuart G. Shafer +	Melissa C. Spata +
Brian David James	Carolyn Rothgeb Krams &	Bernard LoBracco, Jr.	Edith Reyer McHenry & Henry	Pamela S. Neff &	John Keitt Pegues IV &	James Eric Reed	Martin Paul Russo	Robert T. Sharkey	Kenneth Siria Spatz
Walter Stanley Jennings, Jr.,	Alan Krams	Joan Losen	D. McHenry, Jr., Ph.D. @	Gerald Robert Hankins	Joy Garcia Pegues @	Sandra K. Reed-Bryant +	Mary Patricia Ryan &	Suzanne S. Sheppe	Lisa Michelle Spiro
M.D. & Judy S. Jennings	Sarah Josephine Lyman Kravits	Christopher Perry Loss	John Francis McKenzie	Florence Newman	Susan Fitzpatrick Pellerin	Joan M. Perry Regina &	Joseph William Ryan, Jr. +	Grant D. Shifflett &	Stephen H. Sprigle, Ph.D. &
Frank E. Jesse	Carol Lynn Krupp	Tamara Stevens Loving	Kelly Okes Meadows	George C. Newman	Mark Frazier Pendergrast	Nick Regina	Peter F. Sahajian	Whitney Snyders Shifflett	Shari Sprigle +
Paul S. Ji, M.D. & Mercy Choi Ji	Susan H. Kuhbach &	Clay Lowery & Sheila Herrling	Jamin L. Mendelsohn	Rebecca L. Newsham	Michael A. Perez	Kelly Cook Reichert	Zahr Kassim Said	Wesley Michael Shifflette +	Susan P. Stark @
Gregory W. John	Peter D. Kuhbach	M. Philip Lucas @	Gregg L. Michel +	Allen Bryant Nichols, M.D. &	Tyler Bradford Perkins &	Bonnie B. Reilly &	Daniel P. Sanders +	Catherine A. Shreve	Andrew M. Stauffer, Ph.D.
Harry E. Johns, Jr.	Sandra Lyn Henning Kulynych &	John D. MacDonald &	Leigh B. Middleditch, Jr. &	Lois M. Nichols +	Juliana De Santis Perkins	Kevin M. Reilly	Elizabeth Davies Sanders &	Daniel Martin Shumaker	Ira Stein
Kathryn Rollins Johnson	Steven Gregory Kulynych	Beatrice MacDonald	Betty Lou Middleditch	Richard Joseph Nicholson, Jr. &	McCoy C. Perry	John Paul Reilly &	Robert Walter Sanders	Daniel Jeremy Siegel	Lore C. Steinhauer
James A. Jokl, Ph.D.	Allen C. Ladd	William Boggs MacLeod &	Ann Louise Brush Miller +	James A. Niederberger @	John Joseph Petchul &	Kristen Anton Reilly	Maria Carter Satterfield	Jason F. Sisney &	Gregory Nathaniel Stern
Philip Tenley Jones	John Cofer Landon +	Ranana B. Rosoff +	Edward Bradford Miller @	Darci M. Niestroy	Sue Ellen Petchul @	Susan M. Reiss	Marietta A. Saunders	Kenneth J. Sisney	Richard H. Stock &
Walter Vincent Jones, Sr. &	Elaine Jackson LaRoche	Surinder Malik & Swarn Malik	George David Miller	Catherine Anna Nowak	Aimee Baird Pharr &	Barbara R. Renner, Ph.D. @	Wynne R. Sbertoli &	Amy Edgar Sklansky &	Kathleen D. Joy +
Dianne Jones	Paul C. Larsen & Gay K. Larsen	Elizabeth A. Managan	Kelly Elizabeth Miller	Fedor A. Oboukhov	Paul Christopher Pharr	L. Adam Reno	Douglas Lee Sbertoli	Joseph Jay Sklansky +	William Jeffery Strudwick
Mikaela C. Joseph	Jade Summer Laughlin	Ashley Blythe Marcus	Thomas Erik Miller	Kevin J. O'Connor &	Giana Marrone Phelan +	Beth Mitsuko Matsui Rice	Charles Wasdon Scarborough,	Karen Skole	Emily Lockett Swafford +
William John Joyce &	John S. Ledbetter, M.D. &	Happy Ciongoli Marino	Sandra Doreen Moles	Leta L. O'Connor	Richard Allan Pierce, M.D., Ph.D.	Keith Carlton Richards	Jr. & Veronica Jean Tucker	Jelena Skoro	Reedy C. Swanson
Patricia E. Joyce +	Deborah Ledbetter @	Nancy Elizabeth Markey-	Barbara W. Moon &	Mark Francis O'Donnell +	Anne Clark Pierson	Bradley Robert Rickel	Scarborough	James R. Skove	John Christopher Sweitzer
Bruce Allan Kahan, M.D.	Jennifer A. Lee	Sercombe +	Norman K. Moon	Marilyn Elizabeth Ogburn +	Chris E. Pikrallidas @	Andrew J. Riso	Eric A. Schaffer +	Beverly Cowherd Smith @	Joseph M. Swift
Raymond Stephen Kandt, M.D.	Sue Ellen Lee	Robert E. Marshall, Jr.	Michael Lee Moore +	Amanda G. O'Malley	Thomas C. Roberts +	Thomas C. Roberts +	Edward P. Scharfenberg +	Bobby Hugh Smith II, M.D.	Justin A.W. Taft
& Irene Matsuura Kandt +	Patrick G. Lerner	Sarah Agnes Marshall	Billie Holder Morgan &	Kaisha T. O'Neal	Andrew C. Robertson &	Andrew C. Robertson &	Nancy Romfh Schlichting	Brian James Smith &	Hans C. Tallis
Susan Jean Aramony Kanelididis	Margaret Williams Levine +	Weldon L. Martin &	William C. Morgan, Jr., M.D.	Michael Anthony Orsina	Whitney Jones Robertson	Whitney Jones Robertson	Kent Schlusssel, Ph.D. &	Emily L. Smith	Joseph J. Taylor, Jr. &
Richard R.E. Kania	Amara F. Lewis	Susan F. Martin	Ruth Ann Morganto	Esther Yin-Ling Ostrow	John Kirby Robinson	John Kirby Robinson	Judy Schlusssel @	Diane Auger Smith &	Patricia L. Taylor
Phillip M. Kasik &	Rebecca Lore Lieser, M.D.	Grant Kohler Mathews	Daniel John Moriarty +	Paul G. Oswell @	Michael David Robinson &	Michael David Robinson &	Susan Wakley Schneider	Garrett Minor Smith	Martha D. Taylor @
Mary E. Kasik +	Michael E. Liggan	Douglas Robert Matthews	David Morris &	Jennifer Hanna Ott	Laura Robinson	Laura Robinson	Henry John Schumann, Jr.	Donald T. Smith	John W. Teahan &
Roma Kaundal	Susan Philips Limber +	Ellen Cecilia Mayock &	Douglas L. Morris	Kelly Marie Padgett	Deborah L. Robinson-Minneman	Deborah L. Robinson-Minneman	John E. Scott, Jr. &	Kathryn S. Smith &	Jerilyn F. Teahan @
Julie Ann Keenan	Yong Lin	Patrick J. Bradley @	Marie Avery Moses	Marianne L. Padgett	Robert Lyle Price & Sally D. Price	& Thomas J. Minneman @	Betty Cox Scott	Wayne Earl Smith +	Ellen M. Thomas

## LIBRARY ASSOCIATE (CONT.)

Harriet S. Thomas  
Gisela Thomlinson +  
Douglas A. Thompson  
Margaret D. Townsend  
Stefanie Mallia Toye  
Quynh-Van Nguyen  
Duong Tran  
Kathleen Craig Traylor  
Howard Tompkins Tripp III &  
Kerry W. Tripp  
Elizabeth Louise Trollinger &  
Eric Florin  
Louise C. Trudel  
James M. Updike

Theresa Brekka Vaccaro  
Kathleen Van Landingham &  
C.H. Van Landingham III  
Philip H. Viles, Jr. @  
Jane Beard Vishneski +  
William Vance vonBorries @  
Beverly Chandler Wade  
John Gregory Wagner +  
Michael R. Wakefield  
Lexine Denise Walker  
Patricia DeJulius Walker @  
Alice Lorraine Wallenborn, Ed.D.  
Douglas L. Wampler &  
Patricia S. Wampler

Chen Wang  
Frank Edward Ward  
David Curtis Warfield  
Karen Simpson Warner @  
Harry J. Warthen III &  
Sally Trapnell Warthen +  
John S. Watterson III, Ph.D.  
Clifford R. Weckstein  
Therese Marie Wegmann  
Caroline M. Weipert  
M. David Weisman  
Christopher J. Wenderoth  
Lynda S. White  
Molly Brock White

Charles Lewis Whited, Jr.  
Richard M. Whitfield, Jr.  
David S. Whitlow &  
Susan Edmonds Whitlow  
Emma E. Whittington  
Katie Holland Wiesel &  
Brent Wiesel  
John M. Wilhelm, Jr. +  
Stephanie Baird Wilkerson  
Jenipher Rauh Willoughby &  
Jeffrey Emory Willoughby +  
Michael R. Wills, M.D. +  
Peter J. Winders +  
Ann Johnston Winton

Matthew J. Witkowski  
James K. Wood  
Lori Lynn Levison Wood  
Vallie Mach Woods  
Lewis W. Wright III  
Russell A. Wright II &  
Laura Bell Wright  
Sarah Porter Wright  
Jennifer Williams Yaggy  
Jeffrey C. Yates  
Fayyadh Ridhwan Yusuf  
Mark Alan Zaffarano  
Paul E. Zebrowski

## MATCHING GIFT COMPANIES

These companies generously  
matched the gifts of their  
employees in support of the  
U.Va. Library.

Abbott Laboratories  
Alcoa Foundation  
Altria Group, Inc.  
Ameriprise Financial, Inc.  
AT&T Corporation  
Bank of America  
Bank of America Foundation  
BASF Corporation  
Coca-Cola Company  
Constellation Energy Group  
Covidien Employee Matching  
Gift Program

Dominion Resources, Inc.  
Eli Lilly and Company  
Foundation  
Erie Insurance Exchange  
Exxon Mobil Foundation  
Freddie Mac Foundation  
Frederic W. Cook & Co., Inc.  
Goldman Sachs Group, Inc.  
Goldman, Sachs & Co. Matching  
Gift Program  
IBM  
InterContinental Hotels Group

Janus Foundation  
KeyBank  
Kimberly-Clark Foundation, Inc.  
MassMutual Financial Group  
Microsoft Matching Gifts  
Program  
Pfizer Foundation Matching Gifts  
Program  
PricewaterhouseCoopers LLP  
Qualcomm Inc.  
Quest Diagnostics, Inc.  
Raytheon Matching Gifts Program

Rockwell Automation  
Shell Oil Company Foundation  
State Farm Companies Foundation  
SunTrust Banks, Inc.  
SunTrust Foundation Matching  
Gift Program  
T. Rowe Price Foundation, Inc.

## CORNER STONE SOCIETY

The University Library thanks  
these donors who have included  
the Library in their estate plans.

Anonymous (2)  
Mildred K. Abraham  
Gilbert S. Bahn  
Ruthe R. Batestin &  
Martin C. Batestin  
D. Foster Beigler &  
Myron A. Beigler  
Warren F. Chauncey  
Mary Lou Clifford &  
Stephen Patrick Clifford  
William M. Cochran, Jr.  
The Honorable Jack M. Coe  
Jean L. Cooper  
Timothy N. Diggs  
William R. Easton  
Betty L. Fall & L. Frazier Fall  
Sandra R. Favro &  
Kerry D. Favro

Pamela Fitzgerald &  
Charles B. Fitzgerald  
Nancy U. Frank  
Kenneth S. Giniger  
Juliet Godson &  
William H. Godson III  
Bernard Goodman  
Alexander G. Gray  
Bernard Gray  
Meredith Strohm Gunter &  
Bradley H. Gunter  
Paul G. Halpern  
Martha B. Hunt  
Douglas M. Joyner  
Jean O. Kerchof &  
William C. Kerchof  
Katharine Kingman  
Frances E. Kulikowski

Barbara W. Lee &  
Parker H. Lee III  
C. Jared Loewenstein  
Mary H. Lupton  
Alastair Sinclair MacDonald  
Pamela L. Malester &  
Allan J. Malester  
Bernard D. Mayes  
Kenneth A. Merrill, Jr.  
Anna Jorgensen Mershon &  
John Hays Mershon  
John J. Moritz  
Randolph P. Pillow, M.D.  
Priscilla A. Randall  
Myra Saladino  
Seymour I. Schwartz  
Ashlin W. Smith &  
Lloyd T. Smith, Jr.

Mary Gray Stettinius &  
Wallace Stettinius  
John M. Stewart  
Frank O. Walsh III  
Yvonne Guy Watterson &  
John S. Watterson III  
John Robert Weatherly, Jr.  
Lucie Weinstein &  
Stanley Weinstein  
H. Kenneth White  
Karin Wittenborg &  
Michael V. Sullivan  
Mary Lacey Long Wolfe &  
Michael Wolfe  
Louise Agee Wrinkle



## GIFTS IN KIND

Listed below are donors of materials given by deed-of-gift from July 1, 2011 through June 30, 2012.

Henry J. Abraham &  
Mildred K. Abraham +  
Albemarle Garden Club  
Katherine Benaroch  
Donald Black &  
Roberta Senechal de la Roche,  
Ph.D.  
George H. Blood  
Ann-Marie Bolton  
Julian Bond  
Caroline Y. Brandt +  
John T. Casteen III &  
Betsy F. Casteen  
Barry Nelson Chodak  
Lynn Coffey  
Arthur Cravan  
Joshua P. Darden, Jr.  
Murray Dewart  
Edward G. Foss  
Elisabeth Frey  
Jennifer S. Gaden  
Robert H. Garbee  
Joel B. Gardner

Susan P. Garrett +  
E. Nicholson Gault, Jr.  
Joseph J. Gazzoli &  
Louise Weller Gazzoli  
Garrett German  
David M. Goodrich  
Nancy Martin Graham +  
Vivian Gray  
Patricia Gunning  
Mary Eleanor Fitzhugh  
Hitselberger  
Charlton G. Holland III  
Elizabeth Meade Howard &  
John Winship Howard  
Margaret D. Hrabec  
Elizabeth A. Hunt, USAF (Ret.)  
& Waller S. Hunt III  
Alan N. A. Ipekian  
Hardee Johnston  
Charles Brian Kelly &  
Ingrid Smyer-Kelly  
Joel S. Kovarsky  
K. Edward Lay  
Angelika R. Levien  
Maurice Levy \*  
Robert Chambliss Light, Jr. &  
Edith M. Light  
Calder Conrad Loh  
David T. MacMillan &  
Susan B. MacMillan  
Bernard D. Mayes

Sandra F. McDonald  
Jerome J. McGann +  
Murray Milner, Jr.  
John Hampton Moore  
Margaret J. Morton \*  
J. James Murray, Jr.  
Gregory Arthur Myers  
Jean C. Newsom  
Donald E. Nuechterlein  
Gerard O'Brien  
Jane Paden  
James D. Parrish, Jr.  
John R. Pflug, Jr. &  
Carolyn R. Pflug  
Ephraim Henry Philippe III  
Powell L. Perkins Trust  
*Linda Gottfried, M.D. &  
Mark E. Gottfried  
Edward Perkins  
Nancy P. Speer &  
Edward D. Speer*  
Patricia Shear Pylypec  
Louis Joseph Richman, Jr.  
Bruce Rodenberg  
Ronald Rubin  
Peter F. Sahajian  
Ann Vaughan Sahlman  
Arthur I. Schulman &  
Gayle M. Schulman +  
Seymour I. Schwartz  
Shelah Keith Kane Scott @

Second Street Gallery  
William Smart  
Barbara Holmes Stoudt \*  
Ralph J. Stoudt, Jr.  
Olivia Taylor  
Ann Tew  
Ross T. Thomas, Ph.D. &  
Susan M. Thomas  
Town of Stanley, Virginia  
Stanley A. Twardy, Jr.  
Sara O. Watson  
Ann Carter Whitehead Thomas  
Arthur P. Young  
Charles Ziegler

## LIBRARY VOLUNTEERS

The following individuals contributed to the Library's services and resources during the 2012 fiscal year by generously giving of their time and expertise. According to Independent Sector, a leadership forum for charities, foundations, and corporate giving programs, the 1,754 hours of time that these volunteers contributed is the equivalent of \$39,644.92. We thank them for their generosity.

Mildred K. Abraham  
Kathleen K. Ansell, Ph.D.  
Joe Arton  
Celia Munro Belton  
Daniel Cavanaugh  
Emily Cone-Miller  
Kelly Durkin  
Mary Roy Dawson Edwards  
Nancy Faulkner  
Brendan Ferreri-Hanberry  
Gayle Foster  
R. Bruce Hunter  
Kendra Hurt  
Anne L. Knasel  
Tony Liu  
Patricia Price  
Jane W. Rotch  
Joan R. Seif  
Catherine Zucker



Every effort has been made to create an accurate list of donors. If you notice any errors or omissions, or would like further information, please contact:

### HOKE PERKINS

Associate University Librarian for Philanthropy  
Office of the University Librarian

### ALDERMAN LIBRARY

University of Virginia  
Post Office Box 400114  
Charlottesville, VA 22904-4114  
hoke.perkins@virginia.edu  
434. 982.2865

## NUMBERS

Budget: **\$28.9 MILLION** Books: **5.1 MILLION** Gate count: **3 MILLION+**  
Uses of e-journals: **2.3 MILLION** Digital scans made from special collections  
this year: **100,000+** Items shelved per month at Ivy Stacks: **82,644** Participants in  
instruction sessions: **16,530** Videos available by streaming: **7,000+** Cups of coffee  
served per day in Alderman Café: **500+** Student assistants: **300+** Staff: **231** Volunteers: **19**

## CURRENT AND COMPLETED GRANTS IN 2012

LIBRARY OF CONGRESS: **\$329,903** for building software to create geo-temporal  
visualizations of archival collections.

THE ANDREW W. MELLON FOUNDATION: **\$1.2 MILLION** to support outcomes of the Scholarly  
Communications Institutes and pilot programs in methodological training of graduate  
students in the humanities; **\$754,438** to enhance the preservation program.

NATIONAL ENDOWMENT FOR THE HUMANITIES: **\$162,175** for the Digital Music  
Notation Data Model and Prototype Delivery System (MEI); **\$254,600** to preserve  
and digitize films from the civil rights era.



**REACHING FOR THE STARS** Tycho Brahe points heavenward in this illustration from Joan Blaeu's *[Atlas maior] Geographia, quae est Cosmographia Blaviana ...*, volume 1, 1662, from the Tracy W. McGregor Library. Completed in 1665, Blaeu's atlas was an 11-volume masterpiece that remains a monument of commercial cartography. Brahe (1546-1601) was a Danish astronomer whose exploration of the stars and planets influenced the work of Johannes Kepler. We used a detail from this image on the cover of this report, and it also inspired the poem by Lisa Russ Spaar on the next page.



## DOG IN A LIBRARY

detail of a dog. *from* Blaeu's *[Atlas Maior] Geographia* (1662)

In stacks, observatory, studio, brain,  
this steadfast ark, this animal, means everything

it cannot name, just as astrolabe, piccolo,  
pixel, telescope, saffron leaves washing tall windows

ignite carrel, screens, staves, sky, pages  
uncut, shelved, but rife with solace:

wind-blown maps, inked prints, catalogs,  
chapter where a girl secretly analog

is seen at last, or the tireless friend  
makes its four-legged, weary wending

for miles to nuzzle again the face of the lost—  
a cosmos, wordless, thawing mind's fiercest frost.

This creature among us—dreaming  
of red toad stools, squirrel fume, horizon—

reads fur, tiles, book attar, me, you. Is orison.  
Is sanctuary perpetual, asleep with eyes open.

LISA RUSS SPAAR



## THE UNIVERSITY OF VIRGINIA LIBRARY ANNUAL FUND

P.O. Box 400314, Charlottesville, VA 22904-4314

Please accept my gift of:

- \$2,500     \$1,000     \$500     \$250  
 \$100     Other \$ \_\_\_\_\_

The University Library fiscal year begins July 1 and ends June 30.

Your annual gift to the Library enrolls you as a Library Associate for the fiscal year in which the gift is made.

Please accept my pledge of \$ \_\_\_\_\_ to be paid by June 30.

Enclosed is a check payable to University of Virginia Library

or charge to:     VISA     MasterCard     American Express

ACCOUNT NUMBER

EXPIRATION DATE

SIGNATURE

You may also give online at [library.virginia.edu/give](http://library.virginia.edu/give)

### MATCHING GIFT:

You may be able to increase your gift. Gifts to the University through employer matching programs are credited to the donor for eligibility in gift clubs.

I enclose my employer's matching gift form.

NAME

SPOUSE

HOME ADDRESS

CITY/STATE/ZIP

HOME PHONE

CELL PHONE

EMAIL ADDRESS

COMPANY

JOB TITLE

BUSINESS ADDRESS

CITY/STATE/ZIP

BUSINESS PHONE

FAX

*\*Please indicate preferred mailing and email address.*

### THANK YOU!

Your gift of any amount is important and is tax-deductible to the fullest extent of the law.

Please visit us on the web at: [library.virginia.edu](http://library.virginia.edu)

Please remove me from all U.Va. Library communications.

FALDC

## CREDITS

© 2012 by the Rector and Visitors of the University of Virginia

### PRODUCED WITH PRIVATE FUNDS BY

Jeff Hill and Charlotte Morford, with help from dozens of Library staff. We are grateful for their time, patience, and creativity.

### CREATIVE BY

Design Army

### SPECIAL THANKS TO

Lisa Russ Spaar, Professor of English and Creative Writing, U.Va.'s College and Graduate School of Arts & Sciences. Also thanks to George Riser, the Albert and Shirley Small Special Collections Library, and the Library's Digital Curation Services department.

### ADDITIONAL IMAGES PROVIDED BY

Dan Addison, Stace Carter, Doug Chestnut, Stacey Evans, Cole Geddy, Chris Gist, Kelly Johnston, Laura Miller, Bethany Nowviskie, Perry Roland, Will Rourk, Edward Triplett, and Steven Villereal.

### ADDITIONAL IMAGE CREDITS

**PAGE 9:** Woodcut of a comet in the *Liber chronicarum* (Book of Chronicles), 1493.

**PAGE 75:** Illustration adapted from a depiction of the royal English coat of arms in Captain John Smith's map of New England in *Advertisements for the unexperienced planters of New-England, or anywhere . . .* (1631), from the American History Collection of the Tracy W. McGregor Library, in the Albert and Shirley Small Special Collections Library.



UNIVERSITY  
*of* VIRGINIA  
LIBRARY

OFFICE OF THE LIBRARIAN  
ALDERMAN LIBRARY  
POST OFFICE BOX 400114  
CHARLOTTESVILLE, VA 22904  
[WWW.LIBRARY.VIRGINIA.EDU](http://WWW.LIBRARY.VIRGINIA.EDU)